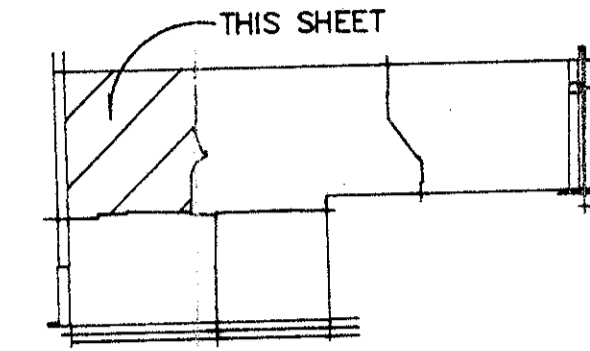


ROSSMOOR LAKES

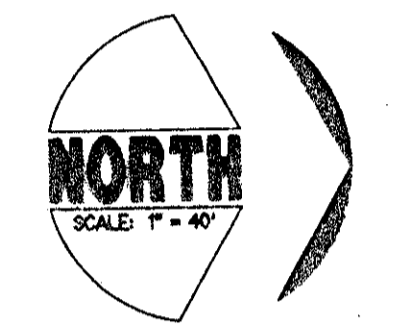
139

SITUATE IN SECTION 27, TOWNSHIP 45 SOUTH, RANGE 42 EAST, PALM BEACH COUNTY, FLORIDA
FEBRUARY 1994 N00°12'02"W NOT PLATTED 2653.51'
WEST LINE, EAST 1/2, N.E. 1/4, SECTION 27 5' LSBE & LIMITED ACCESS EASEMENT
SHEET 4 OF 6

STATE OF FLORIDA } SS
COUNTY OF PALM BEACH }
THIS PLAT WAS FILED FOR
RECORD AT _____ DAY OF
THIS _____ A.D. 1994 AND
DULY RECORDED IN PLAT BOOK
_____ ON PAGES _____ AND
CIRCUIT COURT.
BY: _____ DC
DOROTHY WILKEN, CLERK



INDEX MAP



GRAPHIC SCALE

*PET. 93.34
5/3/3/K
ALWC. #000/
7/12/95*

LEGEND

- UE ■ UTILITY EASEMENT
- OH & ME ■ OVERHANG & MAINTENANCE EASEMENT
- CME ■ CANAL MAINTENANCE EASEMENT
- LSBE ■ LANDSCAPE BUFFER EASEMENT
- LME ■ LAKE MAINTENANCE EASEMENT
- DE ■ DRAINAGE EASEMENT
- LWD ■ LAKE WORTH DRAINAGE DISTRICT
- RD ■ RADIAL
- NR ■ NON-RADIAL
- R ■ RADIUS
- Δ ■ DELTA
- ARC ■ ARC
- CHORD ■ CHORD
- SET PERMANENT CONTROL POINT
- SET 4" x 4" CONCRETE PERMANENT REFERENCE MONUMENT
- POINT OF TANGENCY OR POINT OF CURVATURE (NOT SET)
- AC ■ ACRES

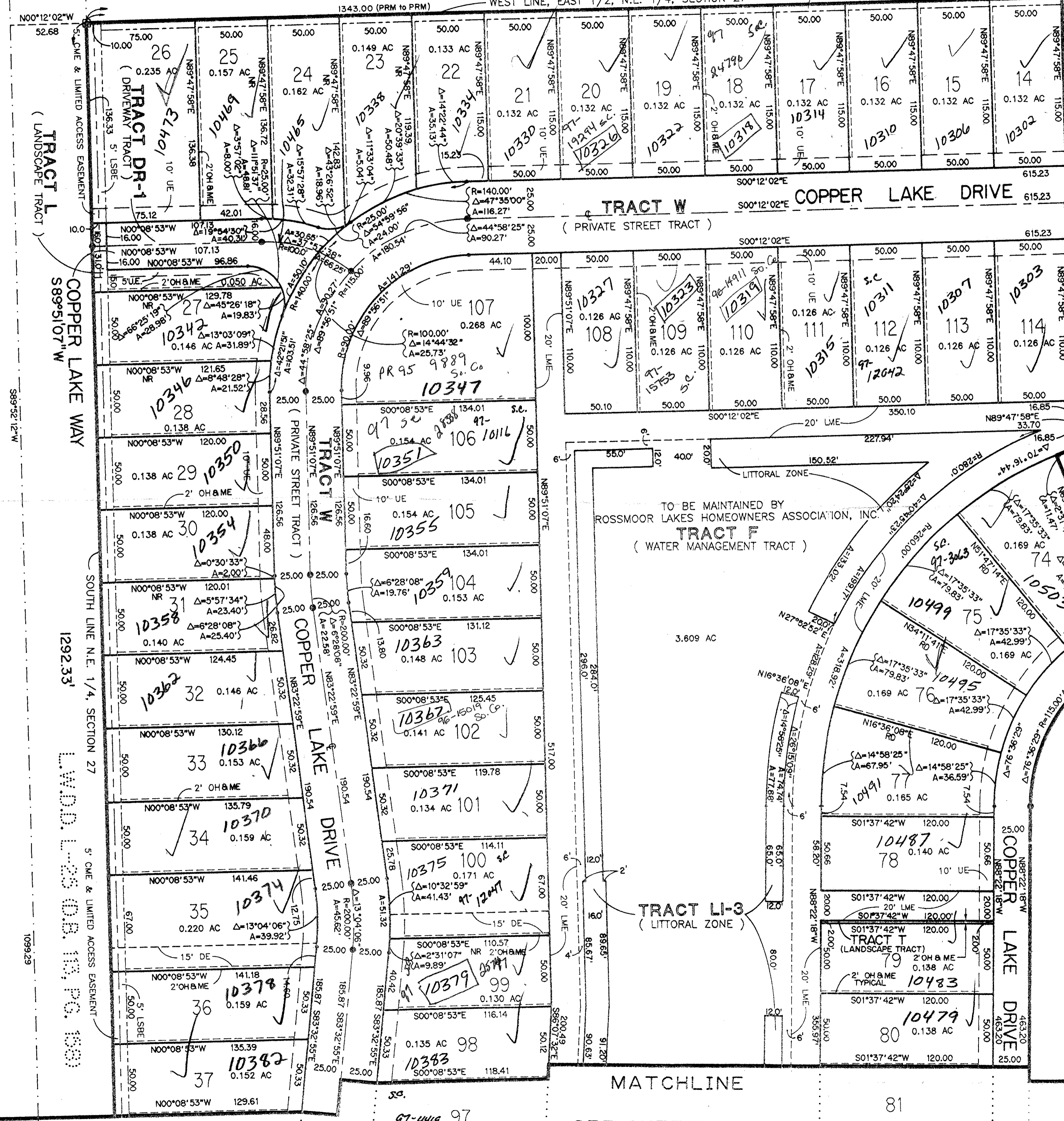
0626-001

KESHAVARZ & ASSOCIATES, INC.
THIS INSTRUMENT WAS PREPARED BY RICHARD P. BREITENBACH
IN THE OFFICES OF KESHAVARZ & ASSOCIATES, INC.,
1280 N. CONWAY AVENUE, SUITE 206
WEST PALM BEACH, FLORIDA 33409
(407) 689-8600 / FAX 689-7476

SEE SHEET 6 OF 6
ROSSMOOR LAKES 73/139

SEE SHEET 5 OF 6

SEE SHEET 3 OF 6



SUBDIVISION * ROSSMOOR LAKES
BOOK 13
FLOOD ZONE B/AI-20 FLOOD MAP * IRSA
QUAD * 35
PAGE 129
ZONING K1U
ZIP CODE 33463

TAZ 448

INDIAN WELLS A.P.U.D. P.B. 52, POS. 146-149

L.W.D.D. L-25 OR. 113, PG. 150

38

81

66

67

68

13

115

73

68

67

66